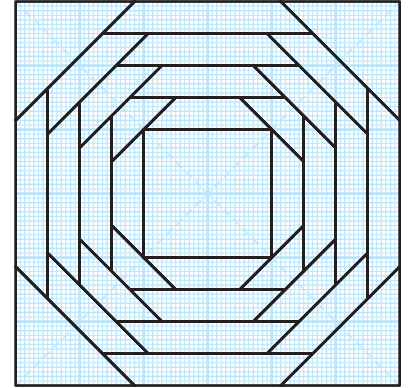


DRAW-ON-THE-LINE PINEAPPLE BLOCK TUTORIAL - Page 1

Now that you've mastered the 8-Pointed Star, I will give you an easier block to learn, the Pineapple Block. If you've ever tried to draft a pineapple block and followed the lines on the graph paper, your diagonal logs were probably a slightly different size than your horizontal and vertical logs. Even when measuring and marking the line placement it is still difficult to get them completely accurate.

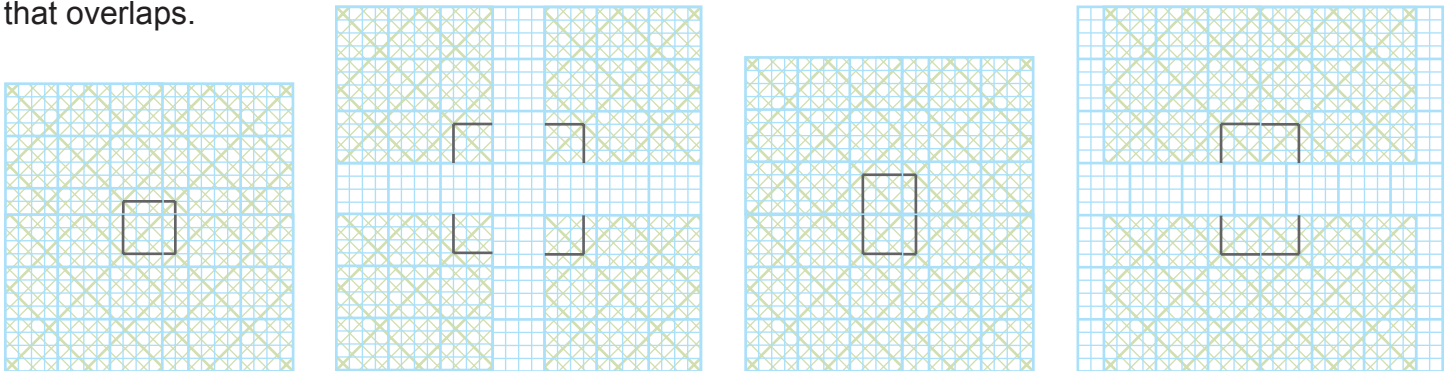
From the 8-pointed star lesson we now know that 7 squares across equals 5 squares diagonally. So now we can draft this block on regular graph paper to a limited degree. 4/inch paper will produce $1\frac{3}{4}$ " logs, 8/inch paper - $\frac{7}{8}$ " logs, 7/inch paper - multiples of 1" logs, and 14/inch paper - multiples of $\frac{1}{2}$ " logs. These would make accurate pineapple blocks with any size center; but measuring, marking, and drawing diagonal lines through those tiny squares might get tiresome.

And what if you wanted to do a stained glass pineapple. That would require 28/inch paper to get accurate $\frac{1}{4}$ " strips between logs. There aren't many of us who would be willing to work with that size graph paper.



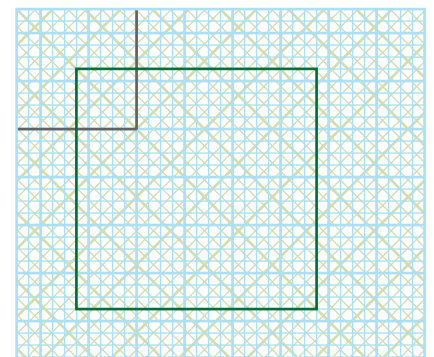
I have a better solution. My pineapple graph paper is designed with $\frac{1}{4}$ " measurements going both horizontally, vertically, and diagonally. I use a different color on the diagonal lines so they can be easily distinguished. It is available as a quarter pineapple which we will be using in this tutorial, as a free download with a 2" center, and may also be purchased in 6" or 12" sizes. One of the 6" sizes is in $\frac{1}{8}$ " scale for miniature blocks.

This graph paper requires a pivot point where your center square stops and your logs begin, so it has been designed using different size centers. By using the quarter pineapple you only have to draft $\frac{1}{4}$ of the block and the finished center of the complete block can be any measurement up to 5". You can increase or decrease the centers of any of the full size blocks by cutting the template through the center in both directions and overlapping the sections to get the desired decreased size or separating the sections and taping to standard 4/inch paper to get the desired increased size. You could also start the center with a rectangle by overlapping or separating 2 sides only. Cut away the extra paper that overlaps.



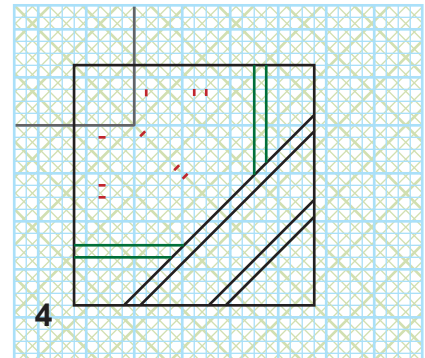
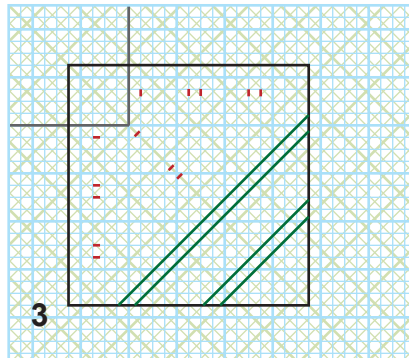
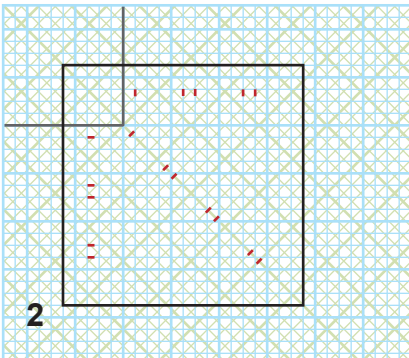
For this tutorial we will be drafting a 5" stained glass block on quarter pineapple paper with a $1\frac{1}{4}$ " corner ($2\frac{1}{2}$ " for full pineapple), 1" logs, and $\frac{1}{4}$ " leading. The full size pineapple block will be 10".

1. Draw a 5" square on the paper. $1\frac{1}{4}$ " should extend past the solid black lines which is the pivot point and the corner square.

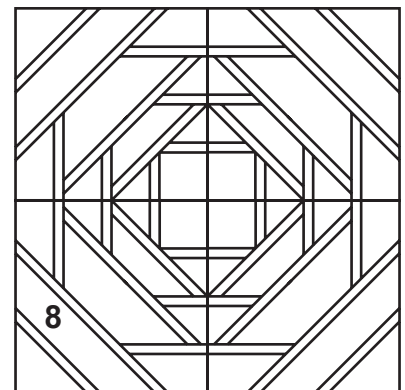
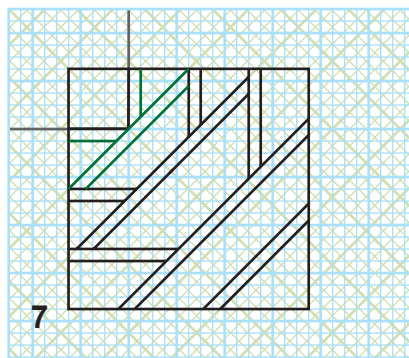
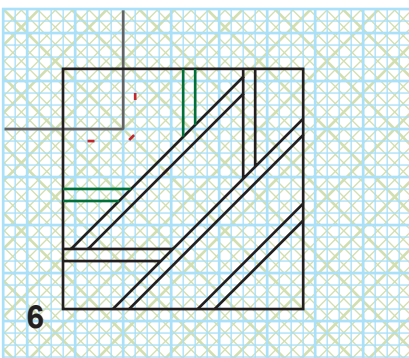
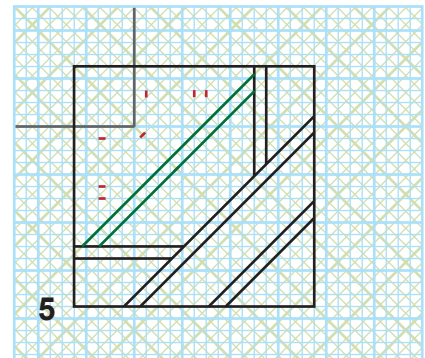


DRAW-ON-THE-LINE PINEAPPLE BLOCK TUTORIAL - Page 2

2. Measure and make short marks on the lines for your leading and logs, horizontally, vertically, and diagonally starting from the pivot point. In this case it's $\frac{1}{4}$ ", 1", $\frac{1}{4}$ ", 1", $\frac{1}{4}$ ". For the diagonal measurements you will have an additional 1", $\frac{1}{4}$ " mark.
3. We will be tracing on these lines from the outside of the block to the inside. This makes it much faster and you don't have to pay as much attention to where the lines start and stop. First trace on the first 4 diagonal lines.
4. Then trace on the first 2 horizontal and vertical lines, ending at the previously traced line. Note: If you weren't doing leading you would only trace 1 line at a time on each side before doing the next diagonal line.



5. Trace the next 2 diagonal lines ending at the previous lines.
6. Trace the next 2 horizontal and vertical lines ending at the previous line.
7. Trace the final 2 diagonal lines, then the final horizontal and vertical lines and your block is complete.
8. If you want to see what the full size block will look like, make copies, cut on the lines where the blocks join and tape together, or you could use a magic mirror. This is just one of the many different pineapple blocks that can be drafted using this paper.



Tip: If you plan on using my Reverse Paper Piecing technique to piece this block, all of the extended lines are already there. If you are using the quarter pineapple paper to make a rectangle block instead of a square, when making copies two of them should be mirror images for them to tape together correctly.