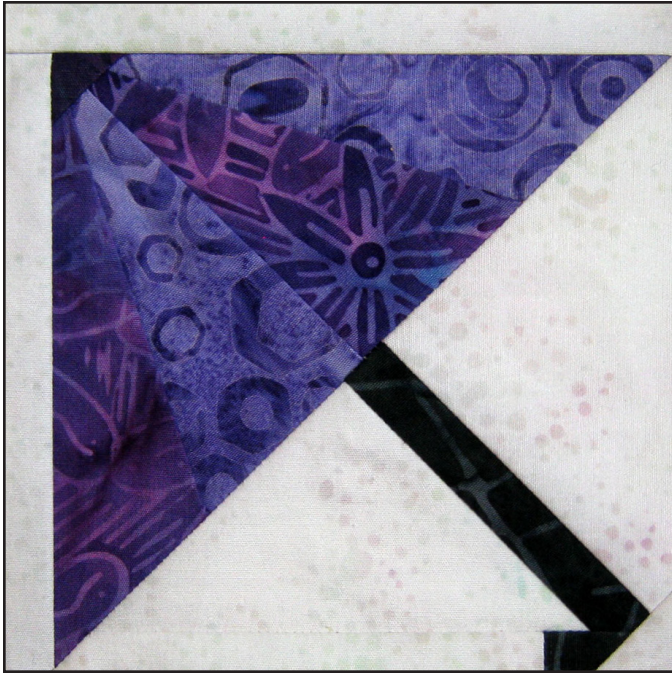


# WEEK 44 - UMBRELLA

## Template Piecing



## CUTTING FABRIC PIECES

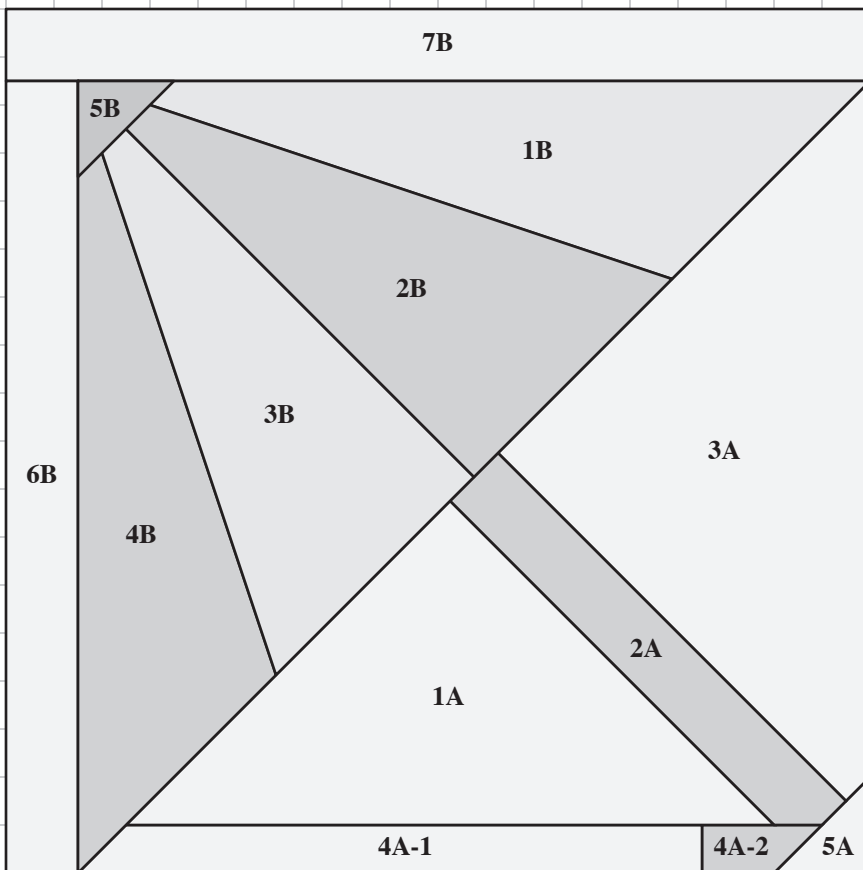
Refer to the Cutting List on Page 2 to cut the fabric pieces.

## PIECING THE BLOCK

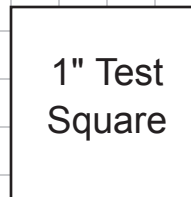
Refer to Week 1 General Instructions and Week 3 - Letter A to piece the block.

Make a copy of the diagram below to make templates. Cut mirror images for (1B, 4B) and (2B, 3B).

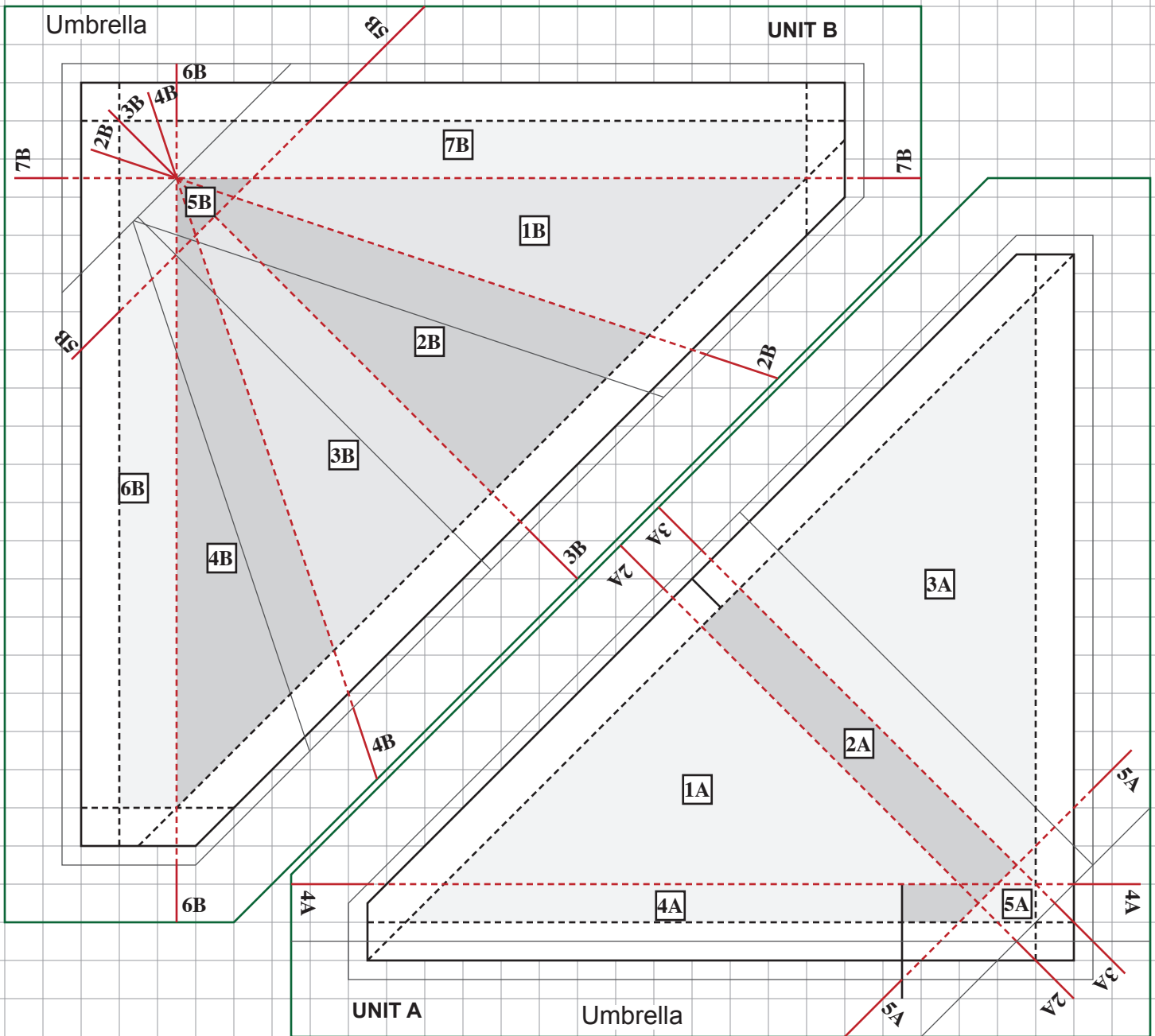
Sew 4A-1 to 4A-2 with a  $\frac{1}{4}$ " seam. Press seam open. Position seam on black line for sewing.



**UMBRELLA**  
4½" Finished



Set Page Scaling = None.  
Background Grid Measures  $\frac{1}{4}$ ".



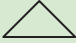
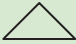

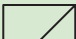
## UMBRELLA

4½" Finished


Set Page Scaling = None.  
Background Grid Measures ¼".

1" Test  
Square

### CUTTING LIST

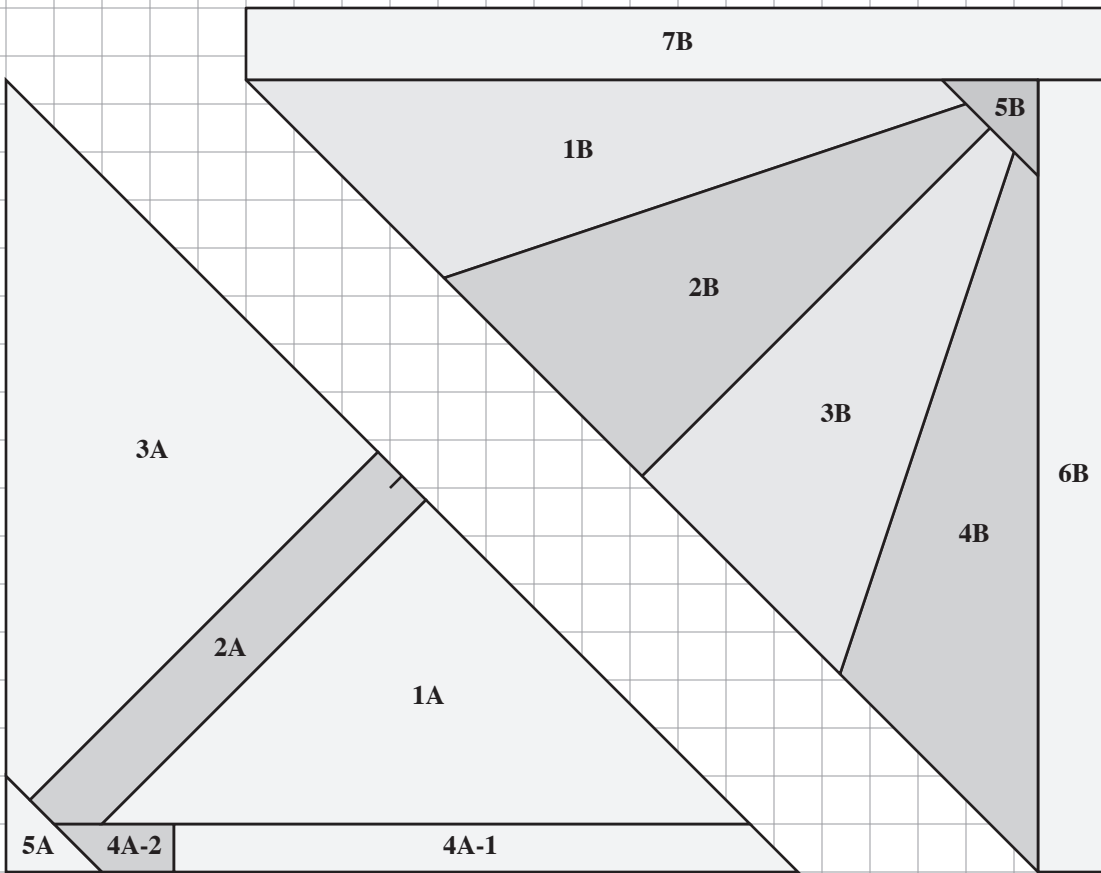
Location	Size to Cut	
1A	5¼" x 2⅝"	
2A	1⅞" x 3⅜"	
3A	5¾" x 2⅞"	
4A-1	4½" x 1"	
4A-2	1⅞" x 1"	

### CUTTING LIST

Location	Size to Cut	
5A, 5B	1⅞" x 1⅞"	
1B, 4B	2" x 5"	
2B, 3B	2½" x 3⅜"	
6B	1⅞" x 4⅞"	
7B	5¼" x 1⅞"	

**UMBRELLA**  
4½" Finished  
Mirrored

1" Test  
Square



Set Page Scaling = None.  
Background Grid Measures ¼".

Use these mirrored templates for  
other paper piecing methods.

