

WEEK 38 - RIBBON

Template Piecing



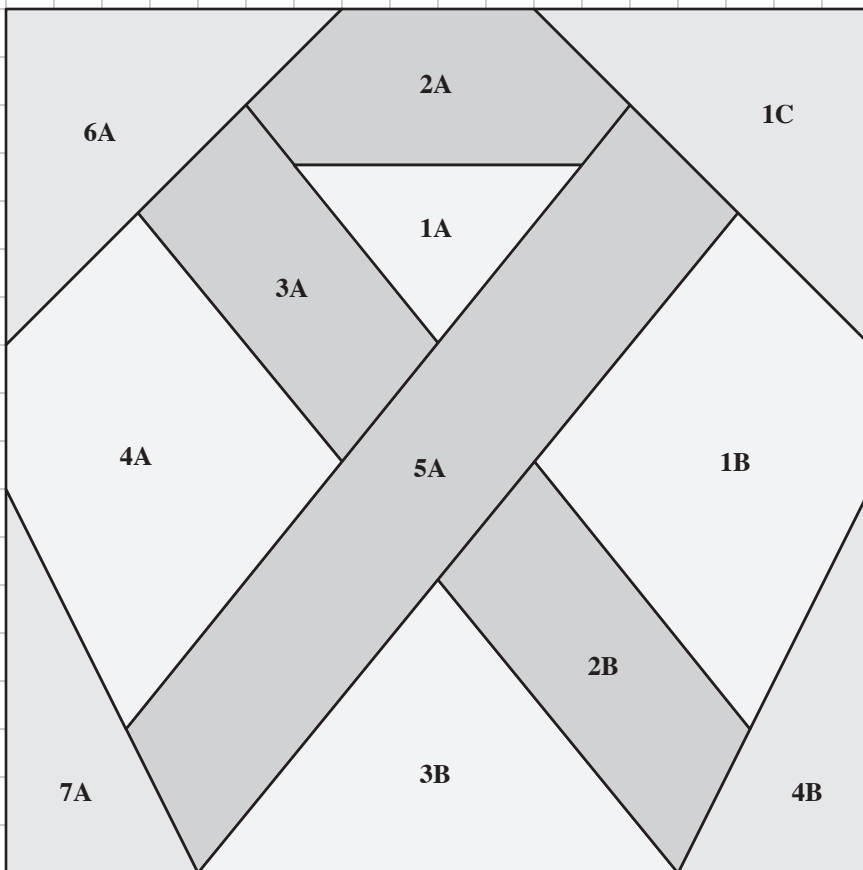
CUTTING FABRIC PIECES

Refer to the Cutting List on Page 2 to cut the fabric pieces.

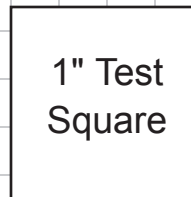
PIECING THE BLOCK

Refer to Week 1 General Instructions and Week 3 - Letter A to piece the block.

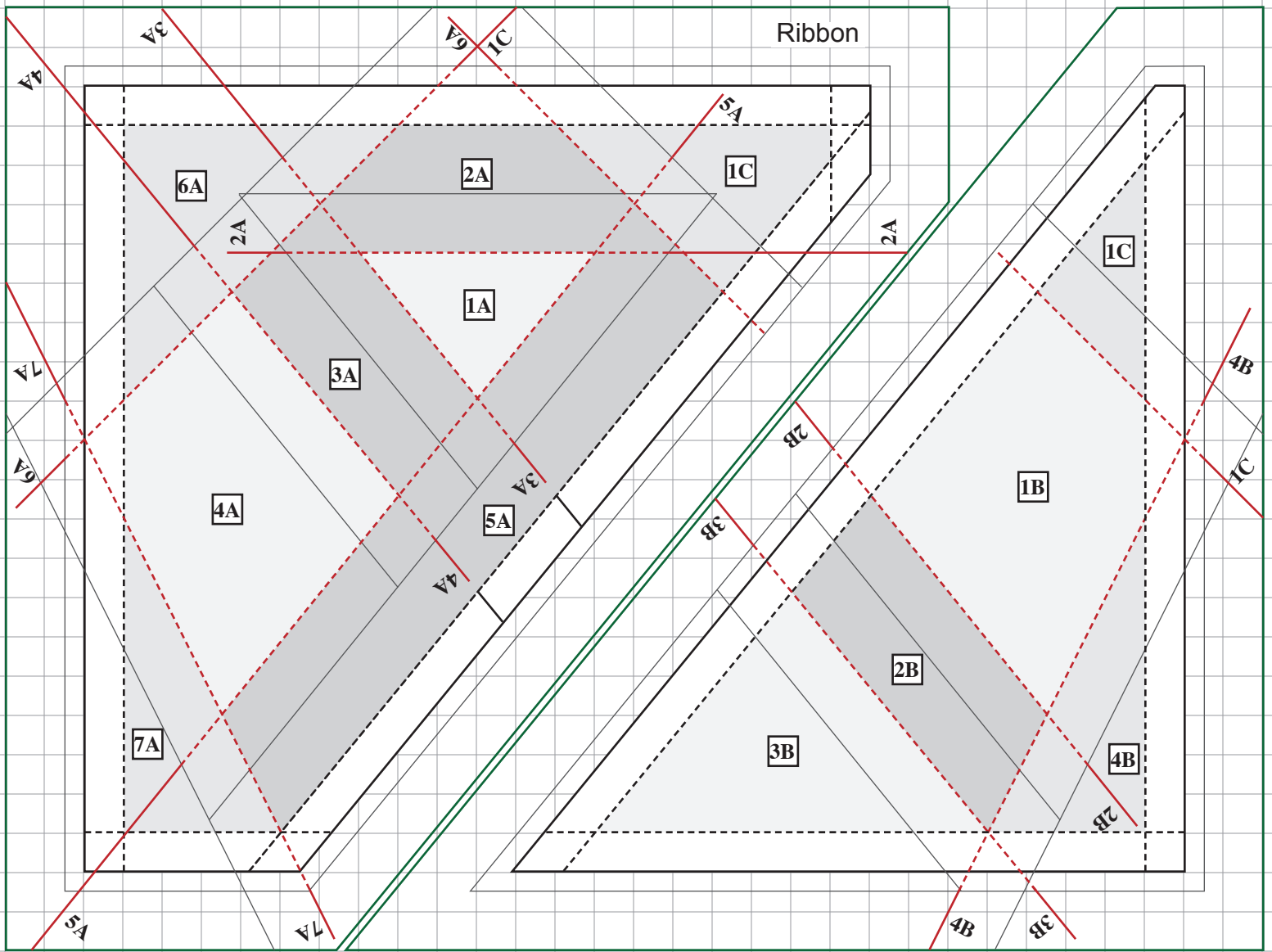
Sew Units A and B first, trim diagonal seams, then sew A and B together, matching intersections and sewing across template. Remove paper from seam allowance in fabric area only. Press seam open. Add Unit C, then square block and remove paper.



RIBBON
4½" Finished



Set Page Scaling = None.
Background Grid Measures ¼".



RIBBON

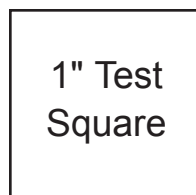
4½" Finished

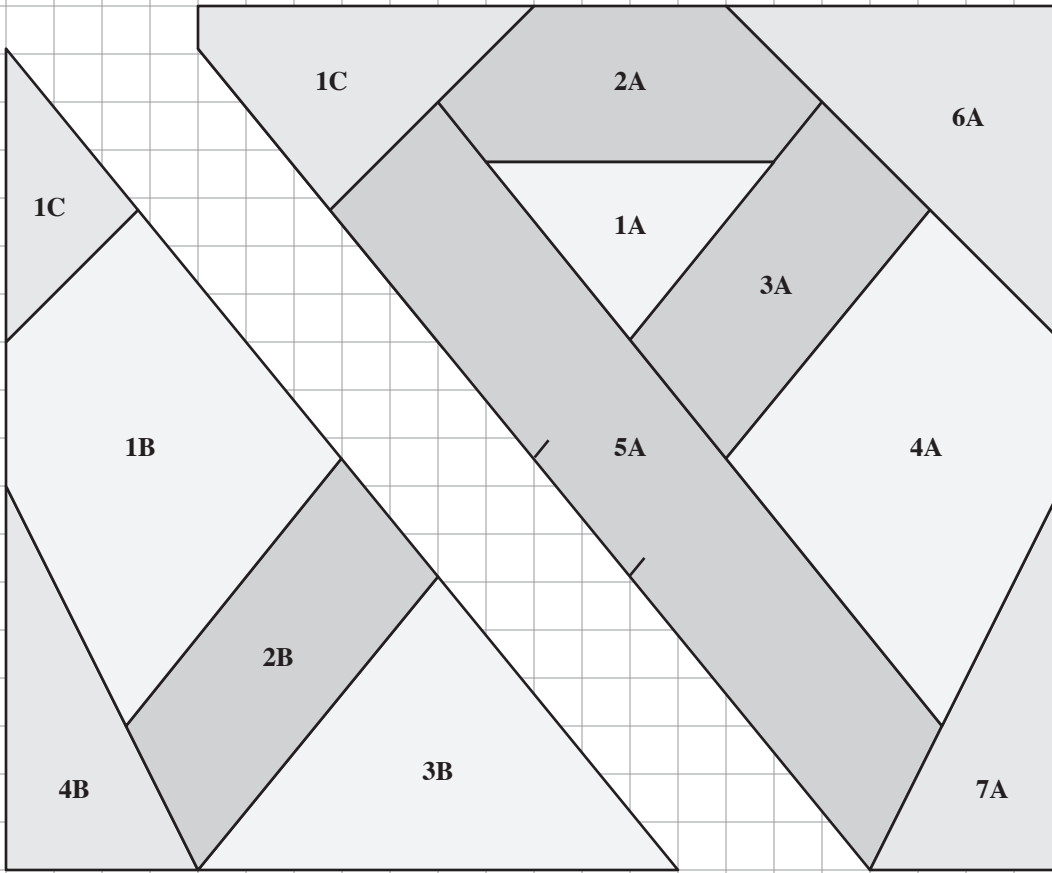
Set Page Scaling = None.
Background Grid Measures ¼".

CUTTING LIST

Location	Size to Cut	
1A	3" x 2"	
2A	3" x 1⅝"	
3A, 2B	1½" x 3"	
4A, 1B	2⅝" x 4"	
5A	1½" x 5½"	
6A, 1C	3⅝" x 3⅝"	☐
3B	4⅛" x 2½"	
7A, 4B	2⅛" x 3½"	

Print diagram on Page 1 on full sheet label or trace on freezer paper to make templates. Layer the fabrics for (4A , 1B) and (7A, 4B) right sides together to cut mirror images.

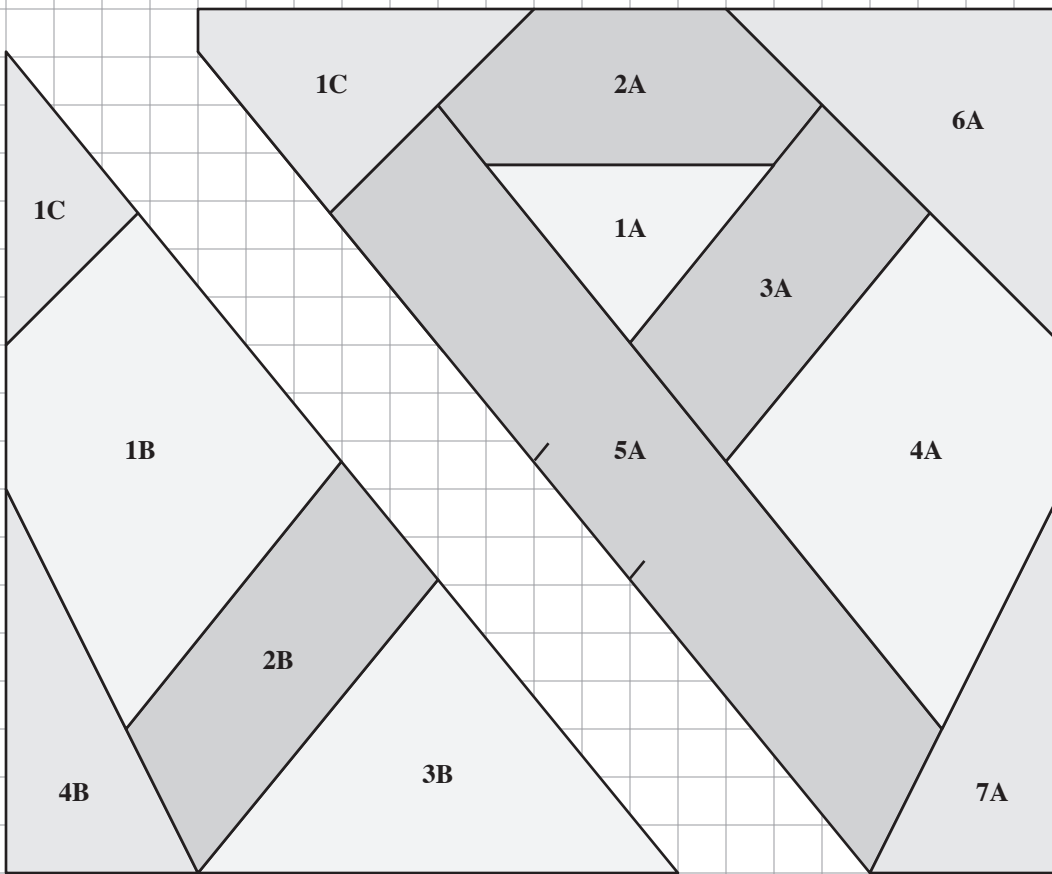




RIBBON
4½" Finished
Mirrored

1" Test
 Square

Set Page Scaling = None.
 Background Grid Measures ¼".



Use these mirrored templates for
 other paper piecing methods.