

# WEEK 37 - LETTER R



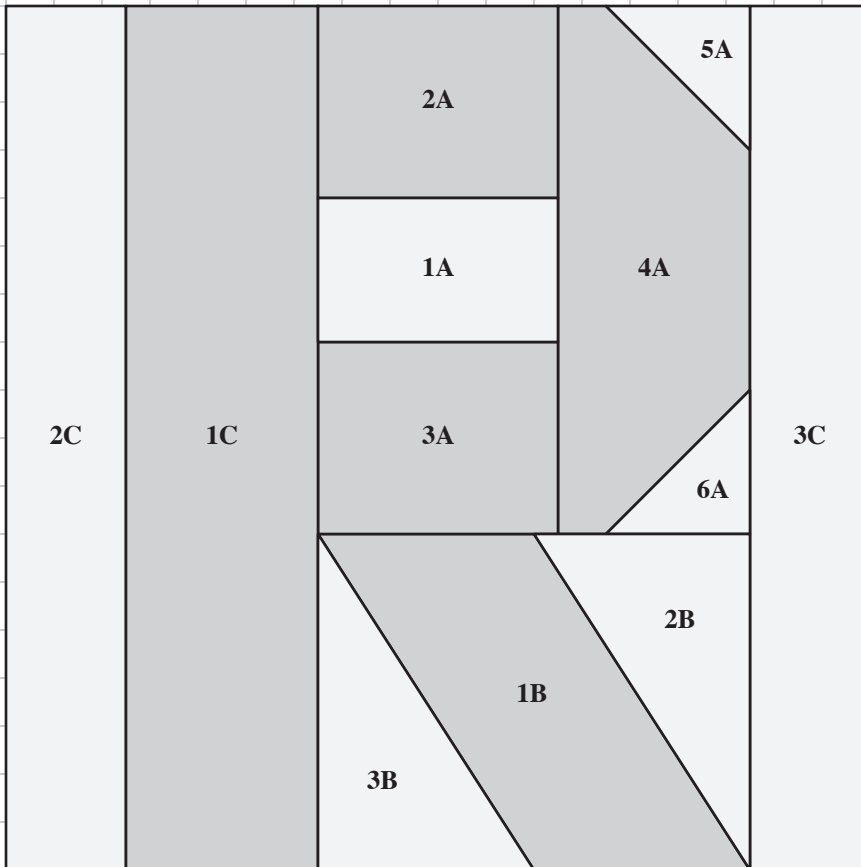
## CUTTING FABRIC PIECES

Refer to the Cutting List on Page 3 to cut the fabric pieces.

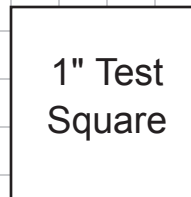
## PIECING THE BLOCK

Refer to Week 1 General Instructions and Week 3 - Letter A to piece the block.

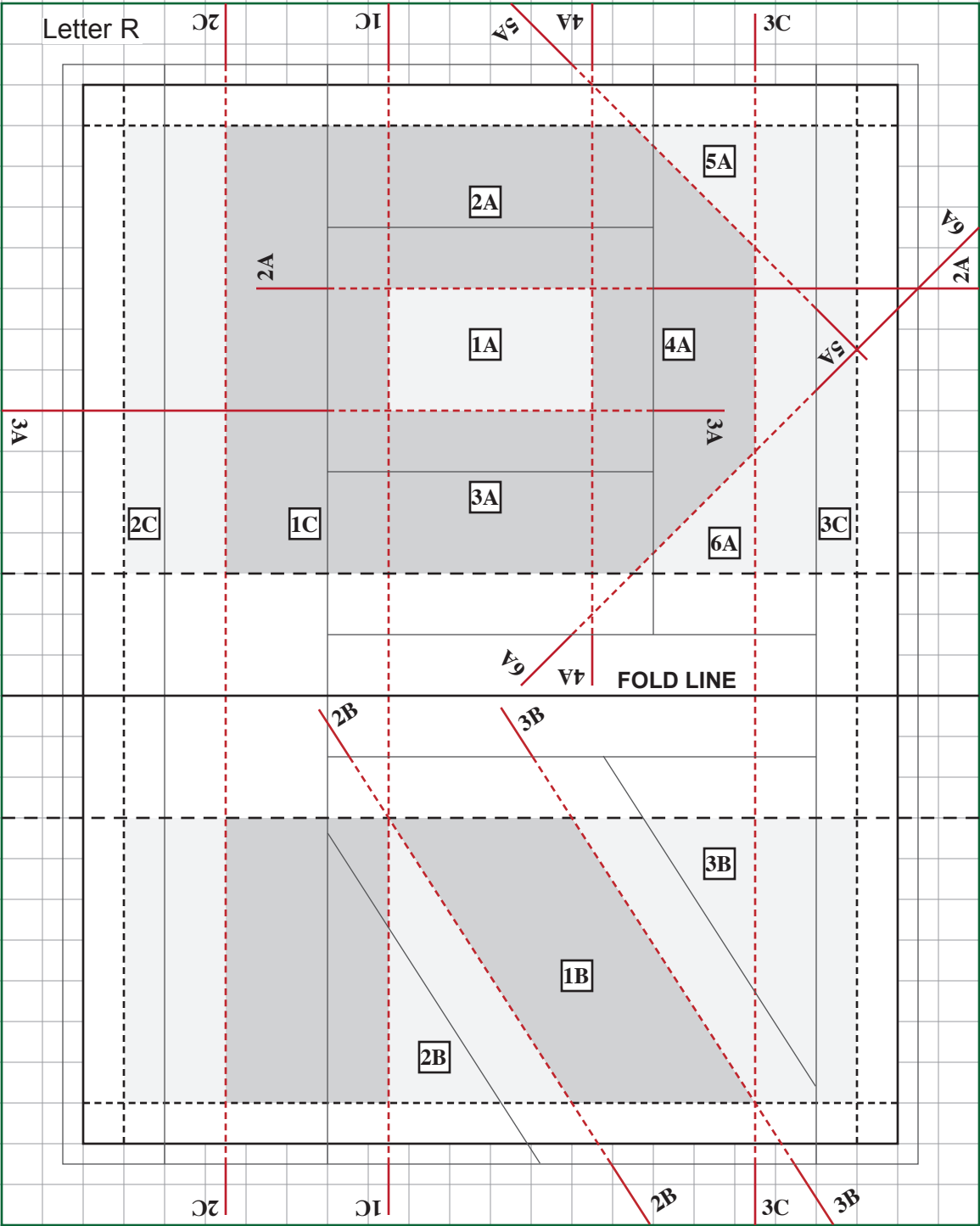
Sew Units A and B first, then fold paper on fold line and sew A and B together on the black dashed line, sewing across template. Trim seam and remove paper from seam allowance in fabric area only. Press seam open. Add Units C, then square block and remove paper.



**LETTER R**  
4½" Finished



Set Page Scaling = None.  
Background Grid Measures ¼".




1" Test Square

Set Page Scaling = None.  
Background Grid Measures 1/4".

# LETTER R

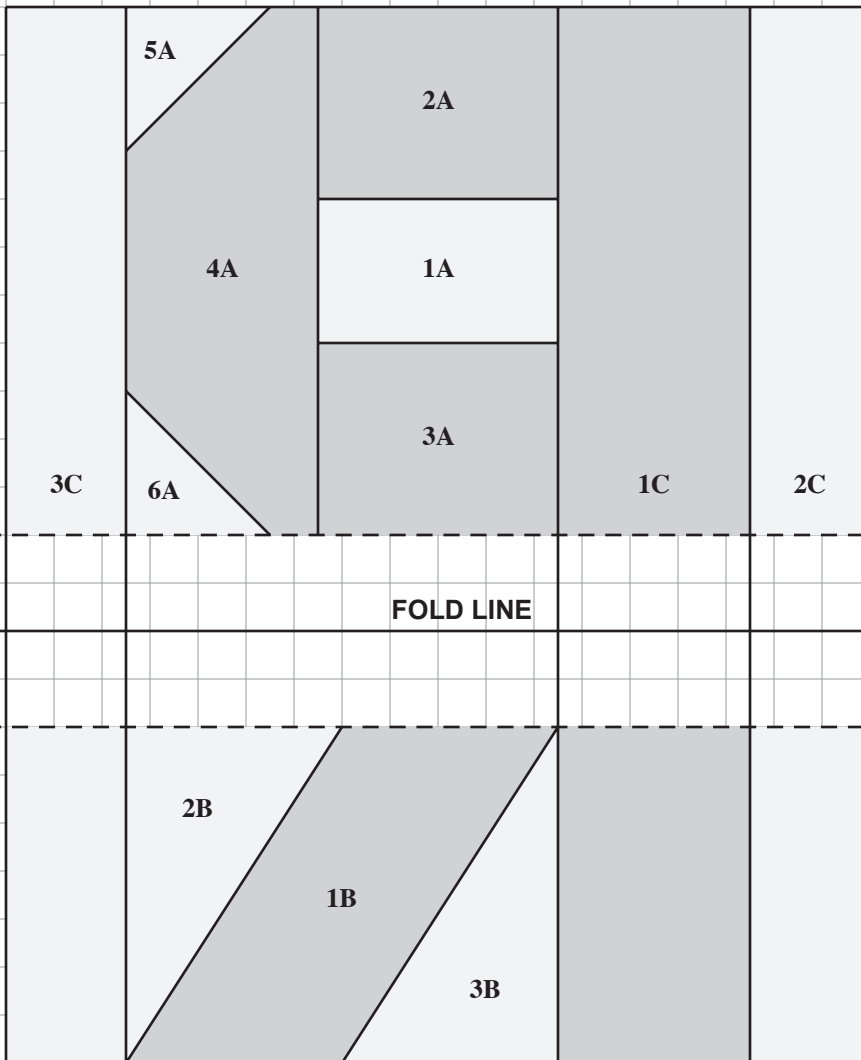
4½" Finished

## CUTTING LIST

Location	Size to Cut
1A	2" x 1½"
2A, 3A	2" x 1¾"
4A	1¾" x 3½"
5A, 6A	1½" x 1½"
1B	3" x 2½"
2B, 3B	2⅝" x 2¾" 
1C	1¾" x 5¼"
2C, 3C	1⅜" x 5¼"

Trace Locations #1B and 2B on freezer paper to make templates.

Use diagonal corner piecing for Locations #5A and 6A.



## LETTER R

4½" Finished

Mirrored

1" Test Square

Set Page Scaling = None.  
Background Grid Measures ¼".

Use this mirrored template for  
other paper piecing methods.