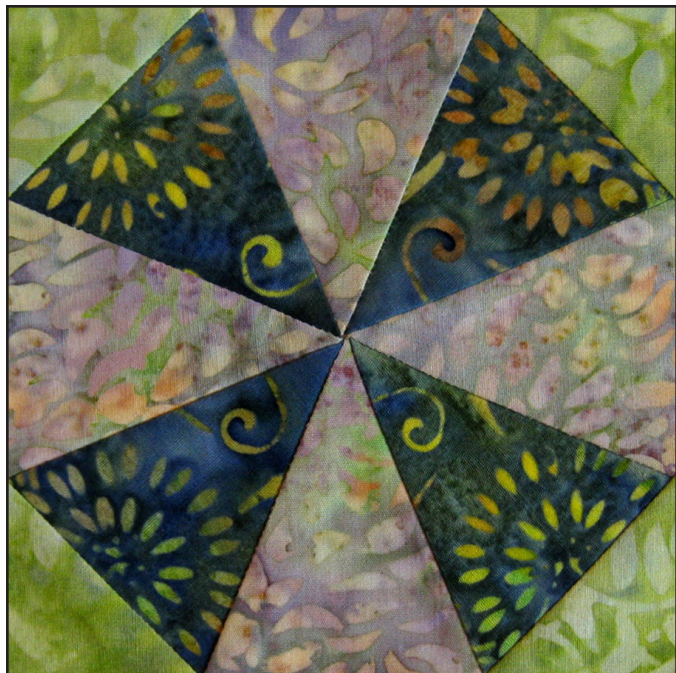


WEEK 24 - KALEIDOSCOPE

Half Diamonds



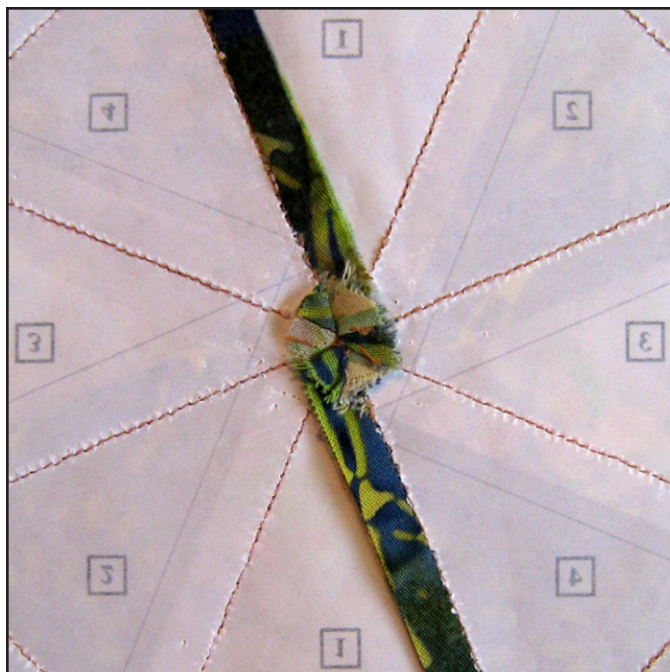
This block is made with 2 identical units. Sewing the units together is similar to making a pinwheel block.

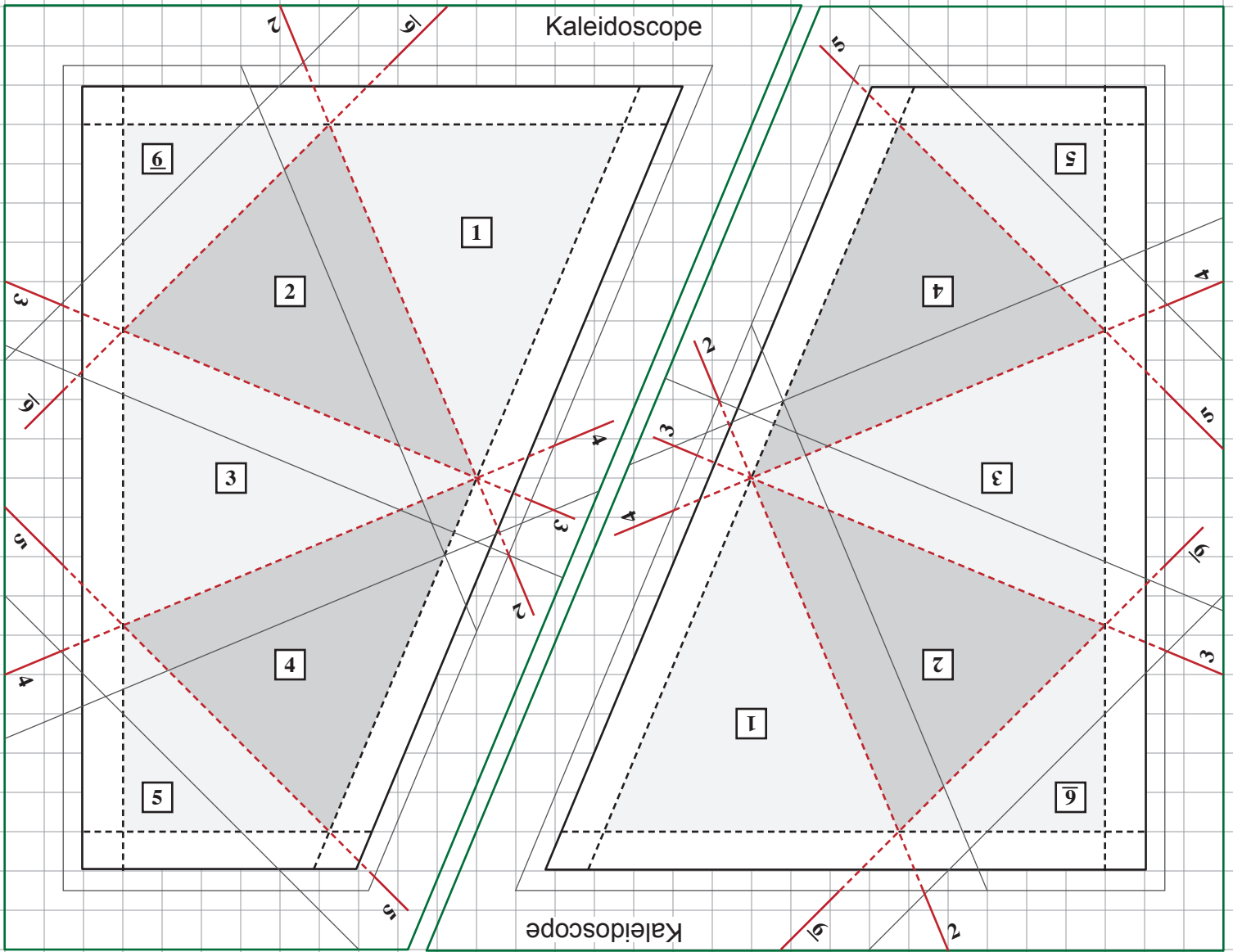
CUTTING FABRIC PIECES

Refer to the Cutting List on Page 3 to cut the fabric pieces. Cut the half diamonds from strips of fabric. They may also be fussy cut.

PIECING THE BLOCK

Refer to Week 1 General Instructions and Week 10 - Dakota Star to piece the block. Sew Units together, basting center first for best match. Press seams clockwise on back side and open at center.





KALEIDOSCOPE
 4½" Finished




1" Test
 Square

Set Page Scaling = None.
 Background Grid Measures ¼".

KALEIDOSCOPE

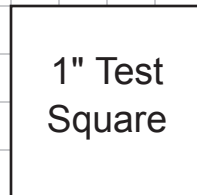
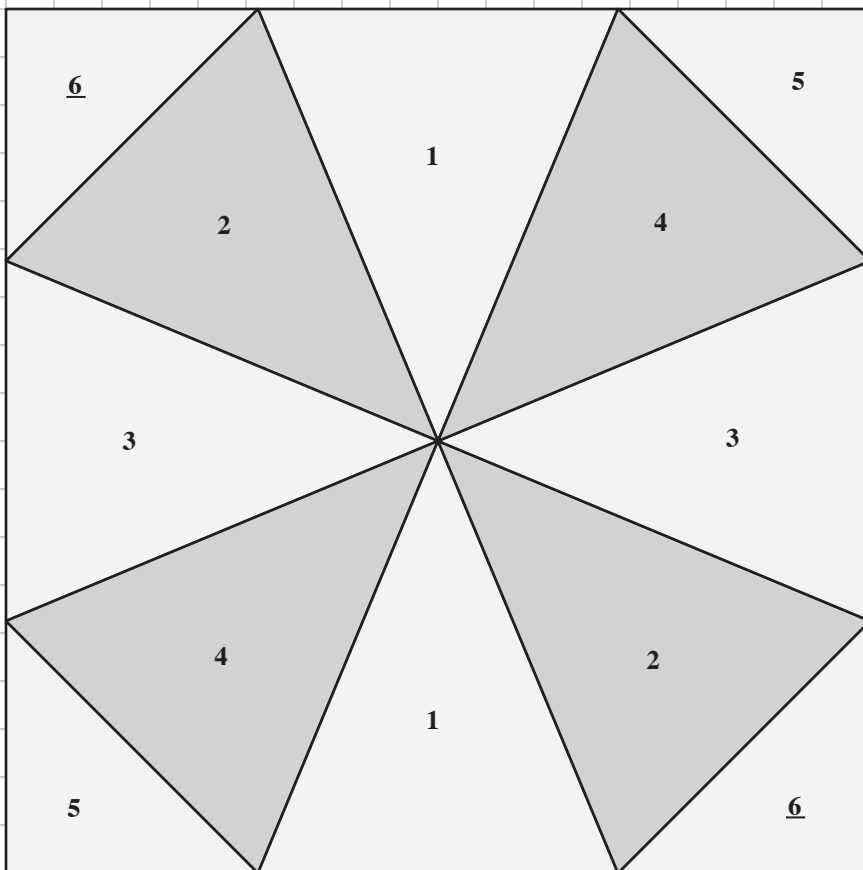
4½" Finished

CUTTING LIST

Location	Size to Cut
1, 2, 3, 4	3¼" strips
5, 6	2⅝" x 2⅝" 

Trace Location #1 on freezer paper to make template.

Locations #1 thru 4 are all equal in size. Layer 2 different fabric strips for cutting.

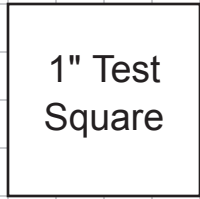


Set Page Scaling = None.
Background Grid Measures ¼".

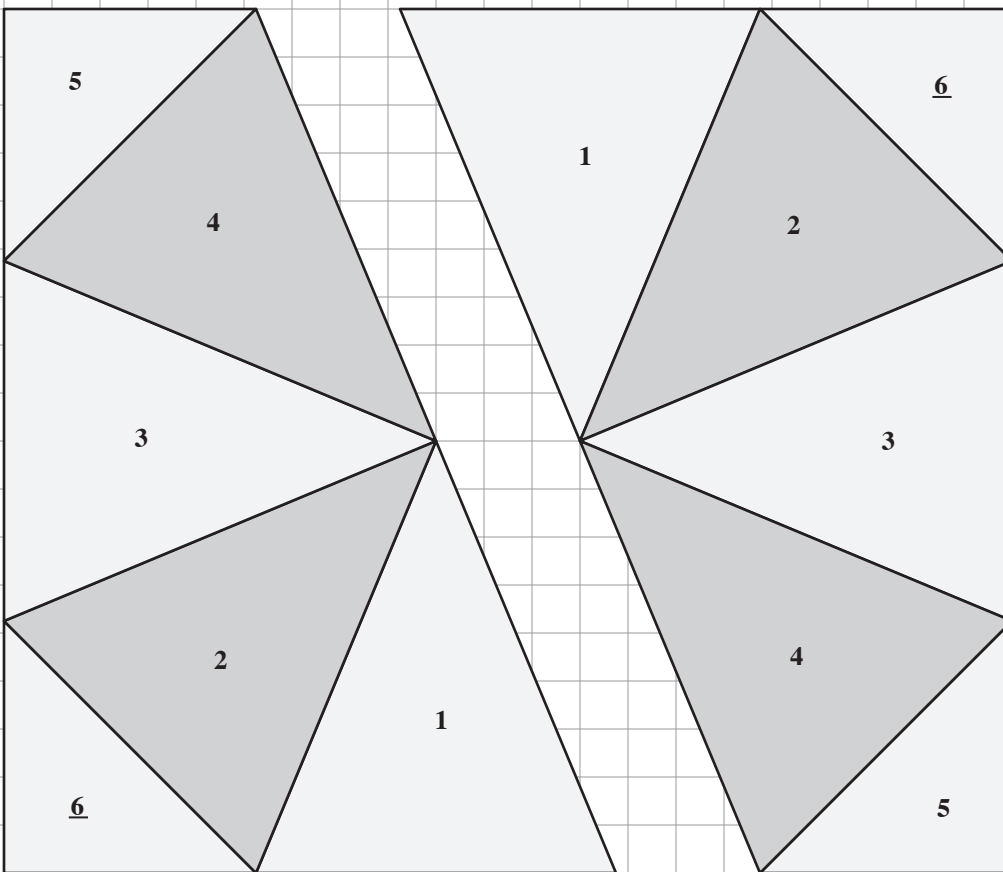
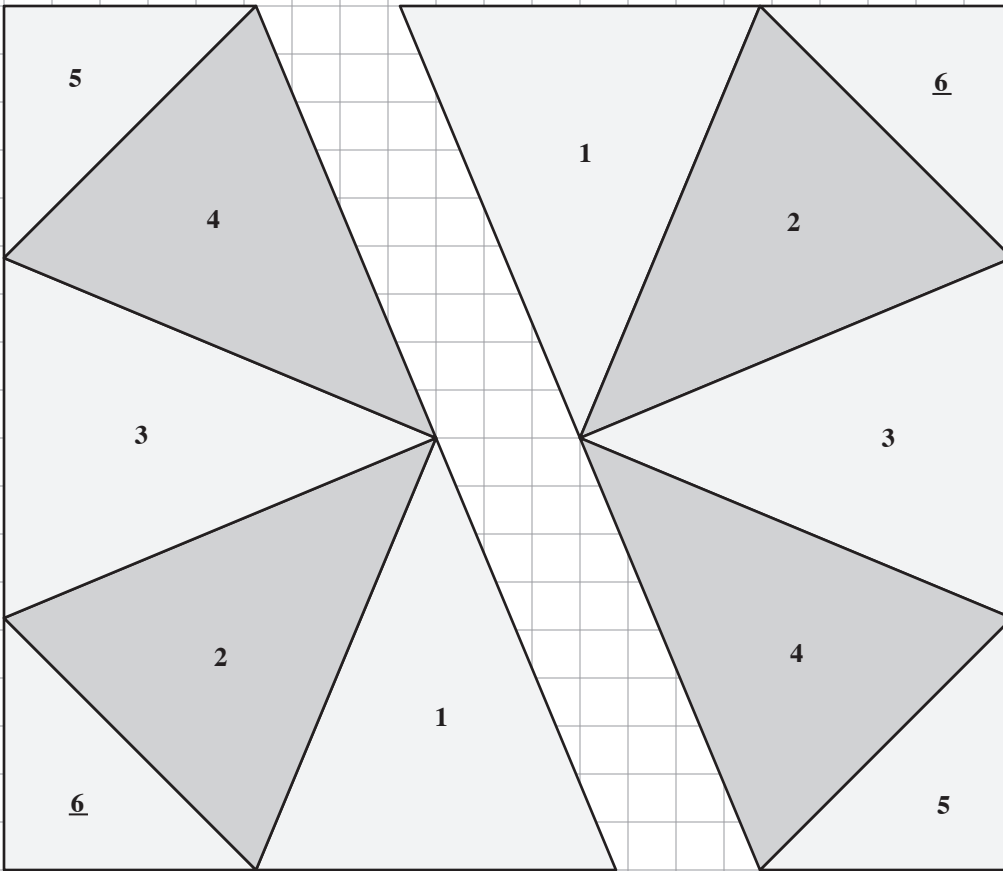
KALEIDOSCOPE

4½" Finished

Mirrored



Set Page Scaling = None.
Background Grid Measures ¼".



Use these mirrored
templates for other
paper piecing methods.